



September - October Edition
2017

EAGLE SCOUTS OF METRO DETROIT
GREAT LAKES FIELD SERVICE COUNCIL
BOY SCOUTS OF AMERICA



LETTER FROM THE ESMD CHAIR

Fellow Eagle Scouts, a new scouting year is upon us and the activities of our committee are in full swing. Since our last newsletter, we had three gatherings, doubled the size of our NESA committee and by the time this message goes out, we have locked in next years' Building Character Celebration date on the calendar. Just sayings in so many words, Scouting is alive in our community.

Many Eagle Scouts have made it their passion again to engage back into the program that helped them become the person they are today. Those that have reached out through our Facebook and LinkedIn pages have made one thing clear, they see the value in the program and want to give back. You can look at your schedule and say I don't have time. Others look and say, "what can I do", that is a question I'm so glad they ask. Maybe that is all that it should have taken. So, I'm asking, how would you like to help scouting. Do you have 1 hour to help as a Unit Commissioner? Can you see yourself active with a unit, supporting the boys and girls in our program? Maybe you want to improve the camp and get away on the weekend to do special projects that need to get done? Then there always being a mentor for an Eagle Scout at the Building Character Celebration. Being a mentor will give a future leader a chance to see what you do at work, how you get things done and expose them to positive career oriented experience.

So today, I ask you, join NESA or renew your membership, and join the Scouting Alumni. What you do today is immeasurable to the life of a scout. You

know firsthand when you joined scouting as a youth and climb the highest mountain, Scouting was the kind of program that can make a difference.

NESA memberships come in two levels. The lifetime membership is \$250.00 and you can wear a silver border Eagle Square knot on your uniform. You also receive news and updates and special member only discounts. The other level is \$35.00 and this is a 10-year membership. You receive many of the Lifetime membership benefits with this one. Please note, all membership fees help support the NESA Scholarship fund, which last year gave out \$455,000 in STEM, Academic and Merit based assistance to College bound Eagle Scouts. See www.nesa.org for more information.

The www.ScoutingAlumni.org website is a great place to get registered back into scouting. The Hiker level is FREE and still gets you registered back into scouting. Pathfinder membership costs \$35.00. Both levels help you stay informed on Scouting around the country and locally. Both offer more discounts at local and online related websites.

If you have already joined NESA or the BSA Alumni, I thank you! September and October are the months for membership, consider reengaging back into scouting, find a position that fits your time. Help us serve our future leaders and who knows some of them might become Eagle Scouts. Feel free to contact me if you have any questions, I'm here to help you in any way.

Once an Eagle, Always an Eagle!

Jay S. Bottorff
Class of 1988
jsbottorff@comcast.net



FEATURED ARTICLE

Republished with permission of the author Summer 2015 – The Grosse Pointer

Dr. Larry Stephenson is the Vice Chair of Gatherings for our committee, he is a semi-retired and well know heart surgeon. He was recognized for his achievements and service to the community and scouting with the Distinguished Eagle Scout Award in June of 2011.



Two of the most important sailboat races on the Great Lakes are held every July, one week apart. The Chicago-to Mackinac Island race and the Port Huron-to-Mackinac Island race can each attract 300 or more sailboats vying for the coveted reward of being first to cross the finish line.

The Chicago race was established in 1898 and is sponsored by the Chicago Yacht Club. Starting from the southwest end of Lake Michigan, racers sail north and east to the top of the lake, through the Straits of Mackinac, (connecting Lakes Michigan and Huron) to the finish line at Mackinac Island, approximately 330 miles. The island, with its historic fort and the famous Grand Hotel, is a major Michigan tourist attraction.

The Port Huron race was established several years later, in 1925, and is sponsored by Bayview Yacht Club in Detroit. The start line is at the southwest end of Lake Huron, but unlike the Chicago race, the Port Huron race has two distinct courses. The Shore Course roughly parallels the western shore of Lake Huron all the way to Mackinac Island, about 235 miles, and includes the smaller and slower entry boats. The larger, (aster boats sail the Cove Island course, sailing northeast to pick up the eastern shore

of the take and roughly paralleling the shoreline all the way to the island, approximately 290 miles. A certain number of boats will sail both Chicago and Port Huron races in any given year, and it is not uncommon for some of those dual entries to be dual winners as well. In some years a “Super Mackinac” is added to the mix in which participants cross the finish line (or one race and continue racing south to the start line of the second venue.

Eagle Scouts Gary Marowske (Eagle 1970) and Larry Stephenson, (Eagle 1959, Distinguished Eagle 2011) have served on Bayview Yacht Club's race committee and, for the past two years, have captained their respective boats as “mark boats” for the start line of the Port Huron race. Gary's boat serves as the signal boat at one end, while Dr. Larry's boat at the other end is called the pin boat. Eleven race officials, including the chief official, are positioned on the Signal boat, with six more on the pin boat. They are responsible for seeing that each start is flawless. There are fourteen starts, going off every ten minutes.

Boats are classified by speed, with slower boats starting early and the fastest class starting last. Gary is owner and president of Flame Furnace, a local Detroit area company. He has also been a member of the State of Michigan's Waterways Commission for several years, and has served as its chairman for the past four years. The commission is under the auspices of the DNR and oversees the state's 102 recreational harbors that are located on four of the five Great Lakes and their connecting rivers.

Dr. Larry is semi - retired, having spent 22 years as Professor and Chief of Cardio-thoracic Surgery at Wayne State University School of Medicine and Specialist-in-Chief for the Detroit Medical Center. At age 15, he became affiliated with the Sea Scouts for a short time, earning the Long Cruise Badge. Both Eagle Scouts have served on various Boy Scout Council level committees in the Detroit area for at least a decade.

RECENT EVENT RECAP



Special thanks to Gary Marowske and Larry Stephenson for organizing the lunch cruise from the Grosse Point Yacht Club to the Bayview Yacht Club on August 22nd. We went on a short tour of the Bayview Yacht Club and enjoyed lunch while listening to a presentation from Gary about his work on the Michigan Waterways Commission.

CALENDAR OF UPCOMING EVENTS



Sherwood Brewing Company Gathering & Pub Tour
45689 Hayes Rd, Shelby Township, Michigan 48315
Wednesday, October 11, 2017 at 6 PM

Fellow Eagles, we will be meeting at the Sherwood Brewing Company at 6:00 pm to enjoy a tour of the brewing process and can meet other Eagles from the area. We will be presenting our NESA program and update all on opportunities to engage back into

Scouting! Spouses are welcome. We look forward to meeting you all there!

Contact: Steve Grogan, steve@atticuswm.com

<https://www.facebook.com/events/506437549696065/>





YEEEEEE HAAAWWWW! !

YOU are invited to the Wild West Camporee
Kensington Metropark - Group Camping Area
4570 Huron River Pkwy, Milford, MI 48380
October 14, 2017 - 10:00 am
Park entry Fee is \$10.00 for the day per vehicle.

Iffin' you city slickers be lookin' fer a Rip Roarin',
Knee Slappin', Horse Snortin', Cow Pokin', Good
Time then y'all better head on over to the Wild West
Camporee right yonder at Kensington Metro Park in
Milford Michigan! It's put on by four of them pesky
districts; Renaissance, Mahican, Ottawa and Sunset.
Eagle Alumni will meet Dr. Larry Stephenson at NESA
table. And y'all know what that means?! It's gonna be
one heck of a good time! YEEE HAAAWWWW!!

Spouses and children welcome to tag along and tour
the camp and their activities. Park entry is extra at
\$10.00 for the day. There will be an optional lunch for
those looking to mingle. Lunch will be outside of the
park. Plan for the weather. Be prepared!

Contact: Dr. Larry Stephenson,
lstephen@med.wayne.edu

Map of Kensington Metro Park:
<http://www.metroparks.com/wp-content/uploads/2017/05/2017-Kensington-Map1.pdf>
Map of Group Camp at Kensington Metropark:
http://www.metroparks.com/wp-content/uploads/2016/03/kensington_group_camp.pdf

<https://www.facebook.com/events/1685864524765483/>



*Meet us at D-bar-A for a day of Hiking and a little
service to the camp!*

December 10th, 2017 at 12:00 noon

*D-Bar-A Scout Ranch – Park in the large parking lot
outside of the Thomas Trainor Scouting Museum
880 E Sutton Rd, Metamora, Michigan 48455*

We will be hiking the Pedro Trail's Yellow loop which
will be a 6-mile hike taking you to all corners of the
camp. You will experience this varied ecosystem of
wooded to sand, hills and valleys. The Pedro Trail
takes its name after Boys Life's mascot Pedro the
Burro. This trail has its own set of challenges. If you
are up for the adventure, we would love to have you.

Service: If you would like to help remark the trail, all
you need to do is bring a hammer. Nails, trail markers
and stickers will be provided.

Supplies: Please plan for the weather, we hike rain or
shine. You should have comfortable shoes (boots),
water for everyone in your family. There are spots
along the way at the tent sites that you can refill. Note
this is well water. Plan to pack a healthy lunch with
light snacks.

All are invited (spouses, children that can hike the
distance, no strollers or walkers. All attending should
be able to make the entire hike). The hike should take
about 5-6 hours.

Where to Meet: We will park in the lot outside of the
Thomas Trainor Museum, the entrance to the yellow
loop is just north west of the parking lot. See maps
below and print them out for your trip.

Contact Jay Bottorff, jsbottorff@comcast.net

Costs: Free!

Map to camp : <http://michiganscouting.org/wp-content/uploads/2015/08/Map-to-D-A.pdf>
Map of Camp: <http://michiganscouting.org/wp-content/uploads/2016/01/D-bar-A-Color-2015-10-28.pdf>

<https://www.facebook.com/events/1801207163241444/>

Project Update – Migisi Fire Bowl

Starting as an idea, Mike Osvath with many volunteers helped make some incredible improvements to the old Trout Lake Fire bowl at D-bar-A Scout Ranch in Metamora Michigan. Since a last year the fire bowl has seen a new sound system installed, a new 9x12 foot shed to house all the equipment and electronic, new electrical was trenched and install this past spring and now the building has a fresh coat of paint and shingled roof.

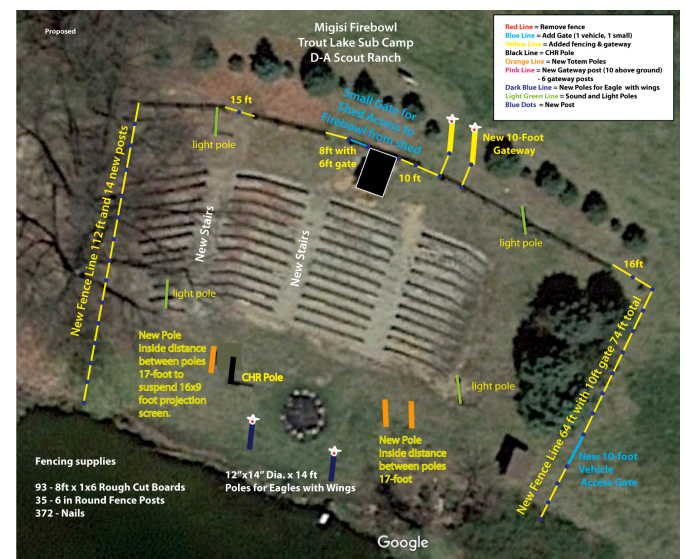
This project is still not done. We still need to replace the existing seating, which lasted 27 years, install new stairs leading to the fire bowl, install 5 totem poles in the bowl area, install new fencing to enclose the entire area and install a new gateway out of steel.

The next steps will take some help from our fellow Eagle Scouts. Just recently, fellow Eagle Scout Jeff Campbell has offered to build a new 10-foot steel gateway to mark the new entrance. The arc will measure 4-foot high by 10-foot wide. Two of 3-foot carved Eagles will adorn each side of the arc and be suspended 10-foot in the air by 4-inch steel square tubing. See gateway proposal rendering below.

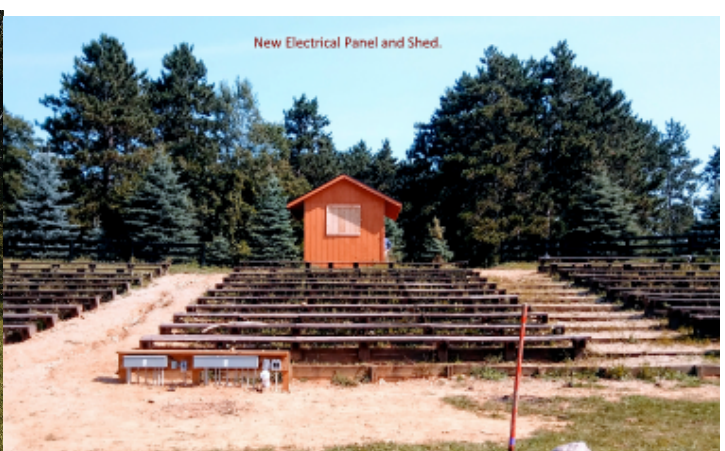
To date, Mike has raised has raised nearly \$8000.00 to support this effort. The following is a breakdown of needs to complete the project.

- New fencing installed by camp supplier (93 - 1x8x8 rough cut boards + 35 posts + 372 nails). \$800
- 2"x6"x16-foot pressure treated lumber for seating area. Included is all screws. \$2,500
- 16-foot by 9-foot rear projection screen with grommets. \$250.00
- 6foot steel tube gate with brackets. \$119.00
- 10foot steel tube gate with brackets. \$129.00

Below are the rough drawings of the fire bowl proposed fencing and gateway projects.



*If you can help financially and/or you know someone that would like to contribute to this project, please forward any gift in kind to **D-bar-A Scout Ranch – Trout Lake Fire Bowl – Custodial Account, 880 Sutton Road, Metamora, Michigan 48455***



Commissioner Service – Opportunity



Recently the Michigan Crossroads Council Commissioner Mike Weber released a report on the number of Unit Commissioners that needs to be recruited for the Great Lakes FSC and where we stand on serving new and existing units. A call has gone out to everyone and anyone who would like to service as a unit commissioner.

There is a need for 100 additional Unit Commissioners for tenured units and another 70 additional Unit Commissioners for New Units for the Great Lakes FSC. That means those units don't have the essential support to help mentor these units with all aspects of scouting. This includes promoting scouting opportunities like camporee, updates from National and the Council events. Without this help, the likelihood of units folding over time due to a lack of commissioner support becomes ever present. Think of this position as the "Friend" that is helpful to fellow scouts and the unit in delivering the BSA promise to youth.

Can you see yourself taking three nights out of the month to visit a Cub Scout Pack, Boy Scout Troop or even a Venture Crew? We offer free training, both online and in person to anyone willing to do a good turn and be the front-line help for our scouts. One night would be a unit visit, the second night would be attending the monthly District Commissioner meetings and finally the District Round Table meeting. If you see yourself as a motivated, problem solver who likes to help others and desires to give back to the greatest youth program, then this is the position for you!

If you have any question about becoming a Unit Commissioner, please contact Fred Hannah, Eagle Scout and father of twin Eagles Scouts at eaglescout1975@aol.com or (586) 295-9091. Fred Hannah is an Assistant Council Commissioner for New Units, he received his Doctorate of Commissioner Science in 2017.

GET CONNECTED!

← → ↻ ⓘ michiganscouting.org/eaglealumni/ ☆

HOME ABOUT US ACTIVITIES & CALENDAR CAMPING PROGRAM RESOURCES SUPPORT US

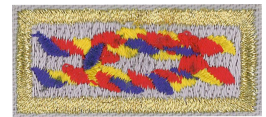
Eagle Scout Alumni

Home > Eagle Scout Alumni

The Purposes of a Council NESA Committee

- Support the council's mission and vision.
- Help the council achieve its Journey to Excellence goals.
- To find and encourage Eagle Scouts to become active resources for the council leadership and programs.
- Recognize Eagle Scouts, Venturing Summit and Sea Scouting Quartermaster Scouts for their achievements.

I am a Parent >
Scouting Safety
Advancement Related Forms
District Roundtables
< I am a Scout
Training
Membership Management
Join Scouting >
Internet Advancement
Service Units Reporting
Journey to Excellence
Find A Field Service Council
Marketing
Eag**CHOOSE AN FSC** ▾



Images Above L-R: Distinguished Eagle Scout Award, Council Alumnus of the Year Award, NESA Outstanding Eagle Scout Award, Glenn and Melinda Adams Eagle Scout Project of the Year Award, and Alumni Award.

AWARDS AND IMPORTANT DEADLINES

Online NESA Scholarship Applications October 31st, 2017

Apply online only: <https://nesa.academicworks.com/>

Council Alumnus of Year Award Nominations November 31st, 2017

Completed Nominations must be received at the Dauch Scout Service Center.

Download form and mail: c/o Denver Laabs,
1776 West Warren Ave, Detroit, MI 40208

Link to form:

<http://www.scoutingalumni.org/atf/cf/%7B781E96C4-D219-453C-85AA-23FF9886E451%7D/Nomination%20Form%20for%20Council%20Alumnus%20of%20the%20Year.pdf>

NESA Outstanding Eagle Scout Award Nominations December 31st, 2017

Completed Nominations must be received at the Dauch Scout Service Center.

Download form and mail: c/o Denver Laabs,
1776 West Warren Ave, Detroit, MI 40208

Link to form: http://www.nesa.org/PDF/542-057_WB.pdf

Glenn and Melinda Adams Eagle Project of the Year Award December 31st, 2017

Completed Nominations must be received at the Dauch Scout Service Center.

Download form and mail: c/o Denver Laabs,
1776 West Warren Ave, Detroit, MI 40208

Link to form: <http://www.nesa.org/PDF/542-026.pdf>

ESMD D-bar-A Gathering PATCH FOR SALE



The ESMD D-bar-A patch can be purchased through our Great Lakes Field Service Council. Cost is \$3.00 each in person and \$4.00 each if you would like it shipped to you. Please print and fill out the form below if you would like your ESMD patch delivered to you. Write all Checks out to GLFSC – BSA and note your check to: ESMD – D-bar-A Patches c/o Denver Laabs. 1776 West Warren Ave., Detroit, MI 48208.

All proceeds will go to help promote future gatherings/events in Macomb, Oakland and Wayne Counties. Please allow for 2 weeks for delivery.

Name _____ Address _____

City _____ State _____ Zip _____ Phone _____

Email _____ @ _____

Total Number Ordered _____ @ \$4.00 = Total dollars \$ _____

SOCIAL MEDIA LINKS – STAY CONNECTED

One fast and easy way to reconnect to ESMD is through our Facebook and LinkedIn in pages: “Eagle Scouts of Metro Detroit”, these sites will have many of the updates on gatherings and future events.



[LinkedIn - Eagle Scouts of Metro Detroit](#)



[National Eagle Scout Association](#)



[Facebook – Eagle Scouts of Metro Detroit](#)



[ESMD Committee Website](#)



[Scouting Alumni and Friends](#)

ABOUT THE ESMD

ESMD is a group of scouts/scouters/supporters who live in the Metro Detroit Area that achieved the rank of Eagle Scout as youth who now seek to reconnect with as many fellow local Eagle Scouts as possible to promote camaraderie and networking among their members while also supporting Scouts and Scouting through NESA sponsored events and mentoring opportunities. NESA and our ESMD Chapter are part of the Scouting Alumni and Friends Committee.

ESMD COMMITTEE

[Jay S. Bottorff](#)

ESMD Chair

Dennis Howie

Vice Chair of Awards

Dave Elrich

Joe Kulwicki

Adams Award Committee

Ron Blaisdell

Brent Ditzler

Alumnus of the Year Committee

Bruce Annett

Brian Wheeler

ESMD DESA Committee

Gordon Draper

John Modetz

Earl Moorhouse

NOESA Committee

Dr. Larry Stephenson

Vice Chair of Alumni Events

Jim Huttenlocher

John Modetz

Building Character Celebration Co-Chairs

Gordon Draper

Trail to Eagle Chair

Steven Grogan

Vice Chair of Communications

Kyle Lloyd

ESMD Facebook/LinkedIn/Website Chair

Mark Fobare

History/Displays/Patches Chair

Dave Berger

Vice Chair of Membership

Josh Every

Alpha Phi Omega Chair

VACANT

Mentor Outreach

Jeff Lang

Rotary Chair

VACANT

Vice Chair of Service

Mike Osvath

Service Chair– Camps

VACANT

Community Service Chair

VACANT

Sponsorships Chair

Members at Large

Tim Crawford

Jeff Day

Fred Dindoffer

Chuck Truza

Brad Simmons

Council President

[Denver Laabs](#)

Staff Adviser