



Sash 'N Bash 2

Leaders Guide

For additional updates, information & to register go to
www.sashnbash.org



Sash 'N Bash 2 is Coming!

Noquet Lodge would like to invite you back to the largest event our Lodge has ever hosted and the second iteration of our lodge-hosted Camporee! Sash 'N Bash will once again be a premier Order of the Arrow experience open to ALL Boy Scouts & Venturers to show the values of having fun in service to others. This year we hope to continue to engage all scouts with the mission of the OA and provide a fun, awesome experience for scouts across Michigan.

On the weekend of May 19th-21st, you'll be able to enjoy a one-of-a-kind Camporee at Armada Fairgrounds in Armada, MI. Whether you are a participant coming to enjoy the weekend with your unit, a candidate ready to join the Order of the Arrow, or a long time Arrowman rekindling friendships of the past, rest assured that your time will be filled with non-stop fun. Noquet's Sash 'N Bash 2 will give your unit an experience that will be remembered for generations!

Noquet Lodge is proud that you will participate in the Order of the Arrow in a brand new way. We could not be more excited that we have this special opportunity to give you and your unit an up-close glimpse of the Order of the Arrow and the qualities that have driven its success for the last 100 years. This is our second iteration of Sash 'n Bash is going to improve and build upon everything that makes a great camporee. We are especially ecstatic that you'll be joining us for two concerts, 24/7 gagaball, and for over 10,000 hours of community service.

For 100 years, the Order of the Arrow has been working hard to serve Scouting and remain steadfast to the high ideals of our mission. Please know that no one could be more prepared to ensure that you have a fantastic time than the Order of the Arrow. We have assembled the most qualified and talented individuals- youth Arrowmen with support from adult Advisers. Noquet Lodge is grateful for the countless individuals who have come together to support Sash 'N Bash 2.

Thank you for your dedication and commitment to sign yourself and your Scouts up for the second Sash 'N Bash.

February 2017
Scouts, Scouters, and Arrowmen,

Welcome to the Sash 'N Bash experience! This event promises to be one that truly highlights the very best of Scouting and will be brought to you by the top youth leaders of our council and lodge. Noquet Lodge will host what is set to be the largest Scouting event in the state of Michigan in 2017, and the capstone activity of the Great lakes Field Service Council.

The Order of the Arrow began in 1915 on Treasure Island near Philadelphia, and was envisioned by its founders, Camp Directors E Urner Goodman and Carroll Edson to be an Honor Camping Society. The purpose behind the order was threefold: Brotherhood, Cheerfulness, and Service. It took on the role of becoming a program within the Boy Scouts of America that retained older boys and kept them returning to camp year after year. Years later, the Order of the Arrow was adopted at a Michigan camp as the official Scouting Honor Society for the entire BSA. Today, it remains a driving force within the greater Scouting program and the leading example of youth training and operational leadership. The Order of the Arrow in Michigan remains strong, with over 4000 registered Arrowmen. Noquet Lodge has been working since 2015 to plan and execute Sash 'N Bash 2 and is thrilled to be your host for the weekend.

This Leader's' Guide will serve as your tool for program planning and communication for your Troop and/or Crew. You'll find information related to registration, timelines, equipment, food and dining, health and safety, preparations, map, schedule, and program activities. We invite you to share these resources with your Scouts, leaders, and parents. Additional information and the registration portal can be found on our website at www.sashnbash.org

We look forward to seeing you on May 19th at the Armada Fairgrounds. Thank you for your interest in Sash 'N Bash 2!

Yours in Scouting,

Nick Meier
Lodge Chief

Mike McCoy
Lodge Adviser
adviser@noquet.org

Janssen Lemley
Staff Adviser
janssen.lemley@scouting.org

Sash 'N Bash 2 Staff

This camporee is lead by a committee of six dedicated youth and their adviser.

Youth Chairmen:

Sash 'n Bash 2 Chairman:	Noah Dabrowski
Registration & Administration Chairman:	Niccolo Beltramo
Activities Chairman:	Tyler Korber
Promotions Chairman:	Steven Lardin
Physical Arrangements and Logistics Chairman:	Matthew Sanker
Ordeal Chairman:	Michael Sanker

Advisors:

Sash 'n Bash 2 Adviser:	Mike McCoy
Registration & Administration Adviser:	Dennis Shagena
Activities Adviser:	Cliff Dabrowski
Promotions Adviser:	John McCoy
Physical Arrangements and Logistics Adviser:	Tyler James
Ordeal Adviser:	Jeb Stockwell

The Sash 'N Bash 2 full staff leadership is made up of over 20 youth and 20 adult advisers. We expect to have a full team of nearly 200 individuals. If you have any youth who want to be a part of the team, they can register at sashnbash.org to join our staff. Staff receive a discounted price, sweet patches, and the opportunity to join a great team!

Interested in being on staff?
Sign up here at www.sashnbash.org

Table of Contents

● Cover	1
● Welcome Letter	2
● Key 3 Letter	3
● Staff	4
● Table of Contents	5
● Overview	6
● Setting the Example	6
● Registration Fee's	7
● What I get for my money	7
● On Site Registration Process	8
● Rules	8
● Identification	9
● Tour Activity Plan	9
● Health and Safety Information	9
● Parking	10
● Policy on Traffic Safety	10
● Itinerary	11
● Arena Shows	12
● What to Bring and Wear	13
● Camping Information	14
● General Information	17
● FAQ	19
● Map	20

Overview

Sash 'n Bash 2 is a premier camporee bringing forth the best scouting has to offer. It will be an incredible experience for all participants ranging from young Boy Scouts to the most experienced Scout Leaders. The event will allow Scouts and Scouters a unique opportunity to experience the founding principles of the Order of the Arrow: Brotherhood, Cheerfulness, and Service.

While Sash 'N Bash 2 can be enjoyed by all parties, only paid and registered participants will be allowed to take part in the activities and events. Sash 'N Bash 2 will take place on Friday May 19th through Sunday May 21st, 2017 at Armada Fairgrounds in Armada, MI.

Activities, exhibits, and service projects will take place Saturday, May 20th from 9:00 a.m. to 5:00 p.m. Activity programs will range from gagaball and ninja warrior to lodge ball and rock climbing. We will also be attempting to put in over 10,000 hours of community service into Armada all around the town. The weekend will impart the high ideals of Scouting to Scouts helping to achieve Scouting's goal of creating responsible citizens.

Saturday will conclude with a huge arena show with a professional dj, laser lights and a foam party. Boy Scouts and Venturers may camp for the weekend or they may come for the day, Saturday, May 20th. The registration cost is the same either way.

Visit the website and Noquet Lodge Facebook page regularly for updates and information regarding the latest exhibits.

- <https://sashnbash.org>
- <https://www.facebook.com/noquetlodge29/timeline>

Setting the Example

The Order of the Arrow is often deemed the National Honor Society of Scouting; therefore we will set forth simple guidelines for all who attend Sash 'N Bash- the Scout Oath and Scout Law.

It is important that Scouts wear their BSA Activity Uniforms (event t-shirt with Scout shorts or pants with the Order of the Arrow sash if applicable.) Leaders will set a positive example by wearing a complete field uniform.

The Good Turn exemplifies Brotherhood and Cheerfulness. The best Scouting experiences stem from "Do a Good Turn Daily." It is up to Youth and Adult Leaders to encourage each member of the Scouting community to make good Scouting happen.

Remember that good Scouting is a constant demand of Scouting, meaning the principles of the Scout Oath and Law should be exemplified at home, traveling, and while attending Sash 'N Bash.

Registration Fees

Registration is open until April 20th. Early registration ends on February 28th, after that costs move from \$25.00 to \$35.00 for individuals.

Fees (per person)

Participants - \$25.00 , \$35.00 (Troops & Crews)

Day Participants - \$25.00 , \$35.00

Saturday Food - \$15.00 *(need 1,000 sign ups by 2/28/17)*

Staff Members - \$30.00 (includes all meals)

Elangomats - \$30.00 (full refund post-event)

Ordeal Participants

Early Bird Rate of \$68.00 end on April 30, 2017

Regular rate is \$78.00 after April 30, 2017

<https://sashnbash.org>

Participant Registration Closes at Midnight April 20th

Due to logistics of camping only Day Participants are able to walk-in

This event is not for Cub Scouts

What I get for my money

<p style="text-align: center;">Bashers <i>All participants not going through the Ordeal</i></p>	<p style="text-align: center;">Sashers <i>Ordeal Candidates Only</i></p>
<ul style="list-style-type: none"> ● 2 Amazing Concerts ● Full Day of Activities ● T-Shirt ● Council Shoulder Patch (CSP) <ul style="list-style-type: none"> ○ Only for those completing service project ● Lanyard w/ Credentials ● Camping (optional) 	<ul style="list-style-type: none"> ● OA Book ● OA Ordeal Sash ● Noquet Lodge Flap ● Brotherhood Sash <ul style="list-style-type: none"> ○ <i>(eligible after 10 months)</i> ● Meals ● Camping ● OA Membership Card ● 2 Amazing Concerts ● Special Ordeal Patch ● Activities after the Ordeal

On Site Registration Process

Camporee Participants:

Enter from Main Street. Signs will be placed on roads and some will be turned into one-ways to direct traffic. All traffic will come in through the southern entrance and park. Registration on Friday will be open from 3:00 pm - Midnight.

Troop/Crew: Trailer and towing vehicle proceed to your campsite. Troop/Crew members park in the parking lot and walk to your site. It is approximately a quarter mile. Scoutmaster/Advisor or designated representative report to Registration (Beef Barn) to register the Troop/Crew.

Individuals: Please proceed to Registration (Beef Barn) to register and receive your camping location.

Order of the Arrow Staff/ Individual Ordeal Candidates:

Enter from the northern entrance on Armada Center Road. Park in parking lot and proceed to the Registration Barn. Ordeal candidates will walk their gear to the OA Staging Location. Special guests will receive camping locations at time of registration. All Candidates *must* be registered by 8:00pm

Ordeal Candidates who arrive with their Troop:

If you arrive with your Troop set up your tent with your Troop and report to OA Staging Location before 8:00pm. Bring your BSA Annual Health and Medical Record (Parts A&B) and gear for the conclave. (see your conclave packing list)

Day Participants:

Registration for day participants will be open from 8:00am until 2:00pm. Enter through the Eastern entrance off North of Main Street. Register at Registration (Beef Barn).

Rules

The Scout Oath, the Scout Law, the Law of the Pack and the Outdoor Code serve as the rulebook for all Scouting events. In addition, the following rules must be observed:

- Buddy system must be used at all times.
- Two Deep Leadership at all times.
- Do not put cans, bottles, trash, garbage, or wastewater into portable toilets.
- Climbing, cutting, or disfiguring of any standing trees or shrubs is prohibited.
- No digging at Armada Fairgrounds or ditching of tents.
- No alcohol or illegal drugs/substances allowed at the Sash 'N Bash.
- No fireworks.
- No pets.
- No bicycles, skateboards, roller skates, in-line skates, power scooters or similar devices will be permitted.
- Drivers and passengers must wear seatbelts at all times while riding in a vehicle.
- No persons may ride in cargo beds or sitting loose in vans.

- Park only where the parking attendants instruct you to park. Room must be left for emergency access and handicapped parking.
- Some areas are off-limits to the participants of the Sash 'N Bash. Please stay out of the areas marked off limits.
- Units and/or individuals may be billed for any damage.
- Do not interfere with or obstruct park officials or Sash 'N Bash staff.
- Failure to comply with any of these rules may result in ejection, forfeiture of camping/attendance rights, and/or prosecution.

Tobacco Products - We encourage leaders to take one additional step toward setting a good example for the youth of our council. Please take a weekend break from use of all tobacco products. Young minds are impressionable and Scouting youth frequently look to their leaders as role models.

We ask that all leaders and adults assist us in enforcing these rules.

Identification

We will identify all participants of Sash 'N Bash 2 by using a lanyard that will be supplied during the onsite registration process. Full Weekend participants will pick up their lanyards Friday evening upon arrival as part of the registration information packet at their Saturday-only participants will pick up their lanyards Saturday upon arrival as part of the registration information packet at the Registration area (Beef Barn). The lanyard will allow you access to all activities and areas. All participants, youth and adult, **MUST** wear the Sash 'N Bash lanyard throughout the entire duration of the event.

Tour Activity Plans

All units attending Sash 'N Bash are encouraged to file a Tour and Activity Plan. Troops and Crews traveling more than 500 miles to the event site or that are from outside of the host council must file a Tour and Activity Plan.

Health and Safety Information

First Aid

First Aid Stations will be open 24 hours a day throughout the event areas. First Aid stations will be located at the First Aid Station and the Headquarters. Whenever possible, Sash 'N Bash 2 participants should advise their unit leader whenever they are feeling ill. All injuries must be reported to a First Aid Station.

Medical Forms

- Units are responsible for keeping medical forms, just like any other campout.
- Individuals will turn their medicals forms into the the First Aid Station.

Emergency Situations

Warning signals (over the radio system) will sound in the unlikely event of an emergency. Please follow the instructions provided if a warning signal sounds. A text message alert will also be sent out via Remind.com

- Medical Emergencies – In case of an emergency, seek assistance from staff.
- Inclement Weather/Thunderstorms/Lightning Safety – Find a low spot away from trees, fences and poles. If you feel your skin tingle or your hair stand on end, squat low to the ground on the balls of your feet. Make yourself the smallest target possible and minimize your contact with the ground.
- Tornado Safety – Seek shelter and stay away from windows. Get out of automobiles. Lie flat in a nearby ditch or depression. Avoid flying debris.

Parking

Several parking areas for day visitors are located within walking distance of the camping, activity and program areas. A lot is located near the camping site for “off-site” parking. All vehicles must be parked in the “offsite” lot, including the vehicle used to tow the troop trailer. Vehicles must be parked only in designated parking lots.

Policy on Traffic Safety

It is essential that some motor vehicles be used to transport materials, supplies, and certain personnel through Sash 'N Bash 2. It is in the best interests of all participants to respect the following guidelines.

Pedestrians

- Walk on the left shoulder of the road facing traffic and carry a flashlight at night.
- Stay off the roadway, except to cross.
- Cross roadways only at established crossings.
- Give emergency vehicles (with flashing lights) the right-of-way.

Motor Vehicles

- Always “buckle up” your seat belt; **insist passengers do likewise!**
- Travel slower than the posted speed limits, as this is a highly congested area.
- Truck beds must not be used for transporting passengers.
- Give the right-of-way to all pedestrians.
- Give the right-of-way to emergency vehicles with flashing lights (restricted to ambulances, fire trucks, and security service vehicles).
- Both vehicular and pedestrian traffic rules will be rigidly enforced.

Itinerary

Schedule of Activities and Events- Participants

Friday

Time:	Activity:	Location:
3:00 pm - Midnight	Registration	Registration Barn
8:30 pm - 10:30 pm	Opening Night Show	Arena
10:30 pm	Pre-Ordeal Ceremonies Begin	OA Staging Location (OASL)

Saturday

Time:	Activity:	Location:
5:30 am - 6:00 am	5k Registration	Activity Field
6:00 am	5k Begins	Activity Field
7:00 am - 9:00 am	Breakfast	Food Barn
8:00 am - 2:00 pm	Day Participant Registration	Registration Barn
8:00 am - 2:00pm	Ordeal Service Projects Begin	Service Sites
10:00 am - 11:00 pm	Service Group A	Service Staging Location
9:00 am - 12:00 pm	Activities Open - Morning	Activity Fields
12:00 pm - 1:00 pm	Lunch Open (<i>Activities Closed</i>)	Food Barn
1:00 pm - 5:00 pm	Activities Open - Afternoon	Activity Fields
2:00 pm - 3:00 pm	Service Group B	Service Staging Location
2:00 pm - 3:00 pm	Candidates Ordeal Ceremonies	Ceremony Sites
3:00 pm - 4:00 pm	Brotherhood Registration Opens	Registration Barn
5:00 pm - 6:30 pm	Dinner Open	Food Barn
8:00 pm - 9:00 pm	Pre-show	Arena
9:00 pm - Midnight	Concert	Arena

Midnight	Brotherhood Walk Begins	Arena
12:30 am	Brotherhood Ceremony Begins	Ceremony Site

Sunday

Time:	Activities:	Location:
6:30 am	Reveille - Cook/Clean/Pack	Camp sites
7:00 am	OA Elections	Food Barn
9:00 am - 11:30 am	Check Out	Registration Barn
8:00 am - 9:00 am	Staff and OA Breakfast	Food Barn
10:30 am - 11:00 am	Scouts Own	Second Stage

Sash 'N Bash 2 is a Noquet Lodge of the Order of the Arrow sponsored Camporee and Induction weekend. This event is to give back and show the future of scouting. In that spirit we are having Troops dedicate two hours of service on Saturday. Service will be provided to the town of Armada. Service will be minimal of difficulty and tool level. Please plan on using this time to build team spirit and leadership in service. Troops will be divided into two groups with half doing morning service and half doing afternoon. During service time service Troops will not be allowed to use activities. Below is a beginning list of activities planned for Sash 'N Bash 2.

Tentative Activities as of 2/17/17 (*Subject to change*)

- Ninja Warrior Course
- The Maze
- Noquet Warrior
- Inflatables
- Basketball Challenge
- Gaga Ball

Arena Shows

- Friday Night
 - Beginning at 8:00pm on Friday, participants, units, guests, and staff may begin queuing up inside the Arena Show pit and bleachers. Please *do not* bring American or Unit flags as there will not be a place to store them while experiencing the Arena Show
 - Concessions will be available - bring spending money.
 - The show will be feature the band Class A as the opening act

- The Headliner for the night will be Jessie Chris, up and coming country music star.
 - <http://www.jessiechris.com/>



- Saturday Night
 - Saturday we will gather again for the Awards presentation and entertainment by Scouts and Scouters from around GLFSC and Noquet Lodge.
 - Beginning at 8:00pm on Saturday, get ready for the Foam Party and glow spectacular, but please come dressed in your expendable comfortable clothes (an old Class B shirt). Please *do not* bring American or Unit flags as there will not be a place to store them while experiencing the Arena Show
 - Concessions will be available - bring spending money.

What to Bring and Wear

Boy Scout Troops / Venture Crews will be responsible for their own meals during this event and should plan accordingly. However, a concession stand will be available. Scouts normally do not want to leave the fun filled event area and go back to the campsite to prepare meals so we suggest either packing a lunch and bringing it with them during the day or using the concession area. For a fee of \$15.00 per person you will be eligible for meals for all of Saturday (Breakfast, Lunch and Dinner). Must pre-register. A minimum of 1,000 participants must opt into the meal plan for us to provide this service. Sunday breakfast will be on your own.

In addition to Troop/Crew equipment, the following list is provided to assist campers in the selection of their personal gear. Refer to your Boy Scout Handbook for additional assistance.

The following list is provided to assist Boy Scouts/Venturers in the selection of their personal gear and is intended to be supplemented by Unit Equipment for Troops and Crews.

Completed Medical Release Form (including signed photo release page)

- Uniform:
 - Boy Scouts / Venturers can wear activity (Scout t-shirt) during the day. Please wear full BSA Field (Class A) uniforms to the Arena Show Friday and religious services Sunday. Order of the Arrow members are invited to wear their sash and should remain in the Field (Class A) uniform unless work project dictates otherwise (this is for Easy staff identification).
- Appropriate clothing for weather conditions – including proper shoes
- Scout Hat for shade
- Towel
- Personal Mess Kit
- Sleeping Bag
- Sleeping Pad
- Tent
- Sunscreen
- Insect Repellent
- Rain Gear
- Toiletries (if camping)
- Sunglasses (optional)
- Personal First Aid Kit
- Small flashlight (only leaders should be in possession of large flashlights)
- Camera
- Money (Trading Post and concessions will be open)
- Religious or devotional text (optional)

Camping Information

Camping Sites

Boy Scout troop/Venture crew camping sites are designed for 25 campers. Campsites will be assigned based on the number of “registered” campers as of the close of business Sunday, April 30, 2017. Additional campsites will be assigned for units with over 25 registered campers. Units with 12 or less registered campers will share a site.

Troop/crew trailers may be placed near your campsite and remain for the duration of the weekend. The tow vehicle may stay with the trailer in the sites. Tow vehicle and trailer may not be moved until Sunday morning. No other vehicles will be allowed at camp sites.

Fire Protection

The Sash 'N Bash 2 camping site will be a large tent city, with many of the fire hazards that afflict any community. Therefore, each unit will need a fire prevention plan and a fire guard responsible for enforcing and carrying out the plan. The fire guard, consisting of the Senior

Patrol Leader or Crew President as chief and the fire warden from each patrol, will have the following duties:

- Regular checking of stoves to ensure that they are off
- Instructing troop members on what to do in case of fire

Most troops and crews will use propane for cooking in the campsite. Extreme care must be taken to prevent injury. Troop and crew leaders must know how to operate stoves properly.

Open flames of any kind can be especially dangerous inside tents, where fire or asphyxiation is a sure result. No open flames of any kind are permitted in the tents. Only battery-operated lanterns are permitted. If a tent catches fire, or if a fire starts dangerously near a tent, drop the tent immediately.

Fires & Portable Fire Pits

There will be NO ground fires allowed during Sash 'n Bash 2 (Camp Fires). Troops and crews will be allowed to use gas/propane stoves in accordance with BSA safety policies/rules. Portable fire pits are allowed however you must bring your own fuel for the fire pit. Take care not to transport firewood for portable above ground fire pits across county lines. Specially designated metal bins will be available for the disposal of ashes and coals.

Please Do:

- Place hot ash only in a barrel labeled "Hot Ash"
- Respect the "No Grilling" zones
- Notify park staff when you find coals on the ground
- Extinguish coals with water

Please Don't:

- Dump ash/coals on the ground
- Light up grill in a "No Grilling" zone
- Dump ash/coals in trash barrels

Digging/Holes

No digging or ditching of tents at Armada Fairgrounds

Campsite Lines

Placing rope or cord around unit campsites is not necessary and is discouraged as a safety concern. Sites will be laid out and properly designated so that lining unit campsites does not become a requirement.

Tents/Flys/Picnic Tables

Troops and Crews are responsible for bringing all unit gear. Tents, Dining Flys, Picnic Tables, Stoves, Patrol Boxes, Cooking Gear, Wash Stations, Water Storage, Coolers, etc will not be provided.

Restroom Facilities and Showers

Porta Johns will be conveniently located in the program and activity areas. Showers will not be available for the duration of Sash 'N Bash 2.

Potable Water

Potable water suitable for drinking and food preparation will be available in the camping area. Families, troops and crews must bring appropriate containers in which to carry water from a central location to the camp site.

Refuse

A Construction Dumpster will be located near the camping area. Specifically designated metal bins will be available for the disposal of all coals and ashes. All coals and ash must be placed into these bins. There will also be provision made for the safe disposal of "grey water". Refuse should be regularly transported by families and units to Dumpsters. There will not be a refuse removal service directly from individual campsites.

Wastewater (Grey Water)

Wastewater MUST be collected and disposed of into designated collection points located in the camping area. You can do this with a 5 gallon bucket or other device that can store non-potable water. Families, troops and crews must bring appropriate containers in which to carry wastewater from the campsite to a central location for collection. Dumping wastewater (sometimes called "Grey Water") onto the ground is a violation of park rules. Help us protect Armada Fairgrounds and dispose of wastewater properly.

Access to Electricity

No, electricity will not be available in the camping sites for general use. No attempt should be made by any individual to rewire any area or facility at Armada Fairgrounds. If you require power, you must provide your own battery, i.e. CPAP machine

Care of Valuables

Each troop should make arrangements for the safe storage of members' valuables. Do not wear or carry any more valuables than necessary with you while out on Sash 'N Bash 2 activities. Leave them in your campsite in a safe storage place. Better yet, leave all valuables home. We cannot be responsible for lost or stolen items. However, there will be a Lost and Found area at the Event Headquarters. Lost and Found items must be collected prior to 12:00pm Sunday. All items not claimed will be donated to charity. Valuable items may be brought to Dauch Scout offices and held for a limited amount of time.

Campsite Health and Safety

Families, Troop/Crew adult and youth leaders are expected to inspect their campsite areas daily in order to maintain high standards of camping and safety.

Troop/Crew Gateways

Due to size limitations, Troop/Crew gateways will not be allowed.

Pop-Up Trailers and RV's

Pop-up trailers, other trailers and RV's may not be brought to Armada Fairgrounds.

OA Staff

Staff will be on-site to service all participants. They will be able to provide directions, information and answer questions. They'll be located at Headquarters, and throughout the fairgrounds.

Order of the Arrow members of Noquet Lodge #29 will be on site throughout the Sash 'n Bash 2, running activities, concessions, Chief's corps, guides, service, as well assisting during the Arena Show. They can be identified by their staff lanyards and t-shirts.

General Information

Uniforms

Boy Scouts, Venturers and their adult leaders are encouraged to wear a BSA field uniform or an activity uniform. The field uniform is to be worn during the evening Arena Show Friday night and the religious services. A field uniform includes a Scout shirt, Scout slacks/shorts, a leather or web belt, if a belt is not part of the slacks, Scout socks, a troop neckerchief, and a Scout visored cap. An activity uniform includes a Scout t-shirt, Scout slacks/shorts, a leather or web belt, if a belt is not part of the slacks, Scout socks, and a Scout visored cap.

Trading Post

Noquet Lodge will maintain a trading post and concessions throughout the event. All materials for sale will be available at the trading post (marked on map).

Concessions

There will be a full concession barn selling all sorts of concessions including walking tacos, hot dogs, and soda. Prices will vary from \$1 to \$10.

Lost and Found

A lost-and-found department will be located at the Headquarters. Persons seeking lost articles should report to the lost-and-found area and fill out an identification card describing the missing item. A check will then be made to determine whether the missing material has been turned into the lost-and-found stations. To guard against the loss of valuables, everyone should mark uniforms and personal equipment with name, home address, and phone number.

Swapping & Trading Patches

Patch trading is allowed and encouraged throughout Sash 'N Bash 2. The Scout Oath and Law should guide all trades.

Golf Carts and Gators

Golf Carts and Gators are for staff use only. Other than for emergencies, event participants will not be allowed to ride in or on golf carts or Gators. Event participants who need a handicap

pass to use a vehicle (other than their personal powered wheelchair or scooter) should check in with safety and security at registration. Every effort will be made to accommodate all event participants.

Leave No Trace and the Outdoor Code

We ask all campers and day participants to live by Leave No Trace principles and that they honor the Outdoor Code throughout Sash 'N Bash 2. A Scout always leaves a site cleaner than it was on arrival.

Policing of Grounds

One of the big problems in connection with an operation of the scope of Sash 'N Bash 2 is maintaining orderly and neat conditions in heavily used areas. All Scouts and leaders are asked to see that all trash is deposited in the containers provided. Constant leadership in this regard will be helpful in preventing a major problem. Every Scout and leader should make it a practice and a tradition not to pass by trash—pick it up and put it in the proper container.

Religious Services

An Interfaith Worship Service will take place Sunday morning at 10:30 am at the Arena stage. Please plan on attending, remember a Scout is Reverent and Adult leaders are setting an example.

Photo Releases

Great Lakes Field Service Council would like to use photos and videos taken during Sash 'N Bash 2 for promotional and marketing purposes. Photographs will only be used for Great Lakes Field Service Council print and electronic materials, such as brochures, flyers, and presentation slides. Great Lakes Field Service Council respects the privacy of all our Scouts, thus no names will be published when utilizing photographs for printed and electronic media.

Refund Policy

Event fees are final except in a limited number of circumstances where a refund may be granted. Refunds may be given only if the following circumstances are brought to a Council employee's attention. Individuals/Groups that cancel their reservations 30 days or more prior to the event date will receive a refund of the total registration fee less a 15% administrative service charge. No refunds will be given for cancellations made less than 30 days prior to the event date. Any/all refund requests must be made within 30 days of the event date.

Frequently Asked Questions

What does Sash N Bash stand for?

Sash = Newly elected scouts will have the opportunity to complete their Ordeal, become an Order of the Arrow member and receive their OA Sash

Bash = We are going to have a party, challenge courses, games and some service (2hrs)

Why should I come?

Because it'll be the best camp out you'll ever go to! Amazing concerts, tons of games, and getting to spend a weekend with your best friends!

But I'm not in the OA, can I still come?

YES! The campout is meant for *ALL Boy Scouts and Venturers*. *You do not have to be in the OA, this is only hosted by the OA.*

When do I have to register by?

Early pre-registration ends on February 28th, so you'll want to register by then. Costs go up from \$25 an individual to \$35.

Do I have to come with my troop or crew?

Your entire Troop or Crew could come and sign up or you could register as an Individual.

Does my unit have to pack in food?

Nope! For an extra \$15, your troop can have all Saturday meals cooked by our staff. The food is going to be absolutely delicious and will help you save time for activities. If your troop does decide to cook for themselves, we will have space and you will be able to pack in food.

Will there be concessions?

Yup! Expect awesome snacks provided throughout the day at our snack locations! Buy a burger, hotdog, or pop whenever you want!

Is it really 24/7 gagaball?

YES SIR! There's a huge coral with lights, a ref tower, and speakers. We will be going all night so don't miss out.

Can I help staff?

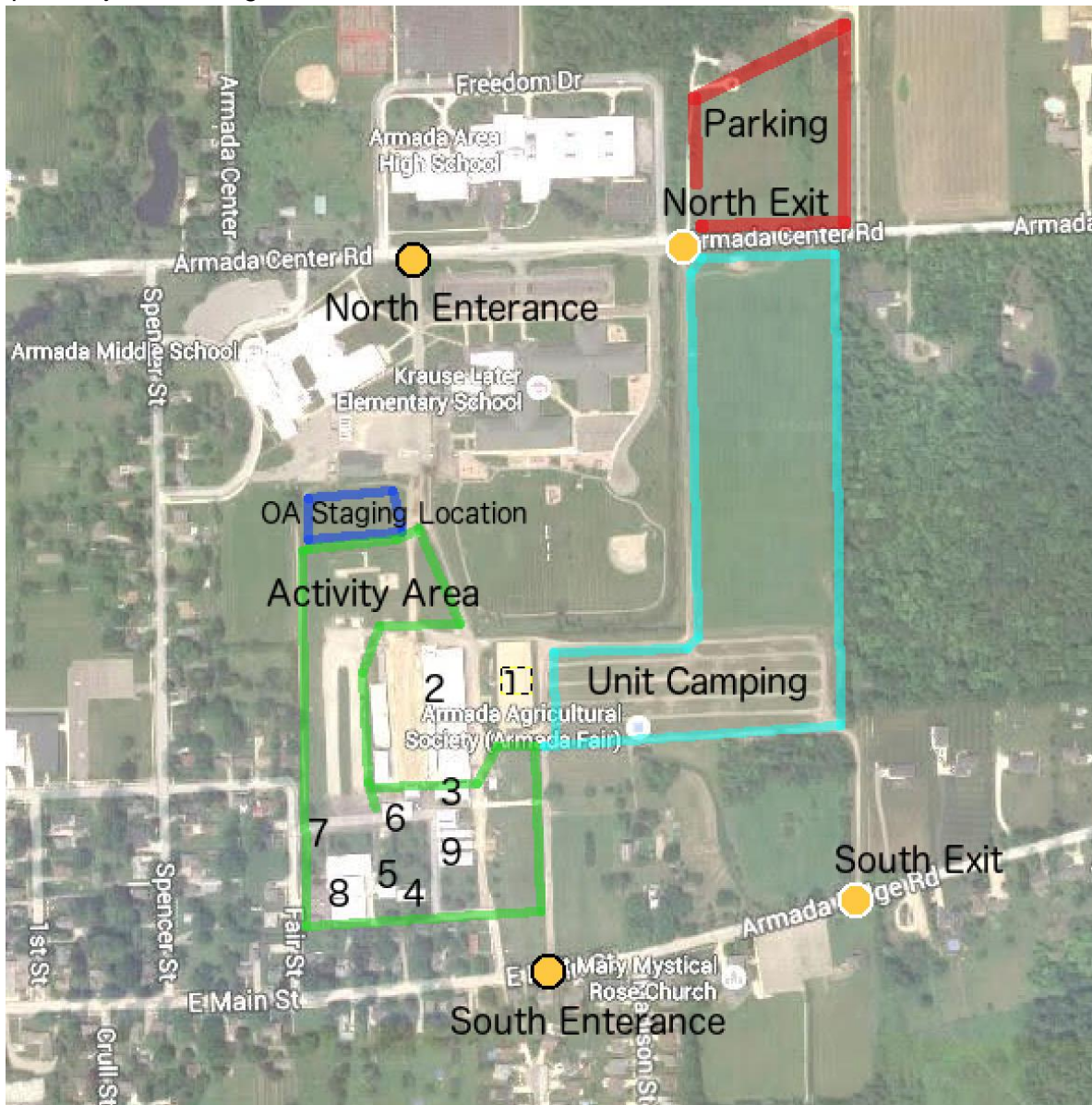
Message us on our facebook page at Noquet Lodge 29 to get involved with our team! Tell your friends to get involved at a discounted rate. www.facebook.com/noquetlodge29

Who is performing at the concert on Friday night?

Jessie Chris, up & coming country music star will be performing! For more information on her, go to <http://www.jessiechris.com/>

Map

Map is subject to change



1. Food Barn
2. Arena
3. Stage
4. Secondary Stage
5. Concessions / Trading Post
6. Registration Barn
7. Side Entrance (*will be closed at start of event*)
8. HQ, First Aid, Activity Barn
9. Activity Barns